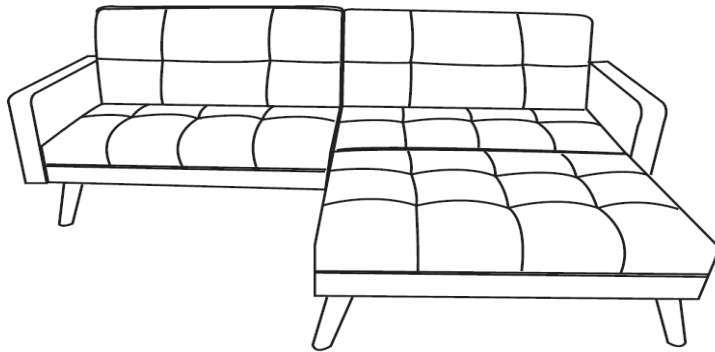



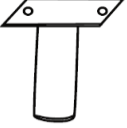
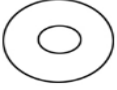

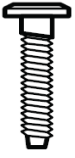


VS1916 Assembly Instruction

ASSEMBLE INSTRUCTION-PLEASE KEEP FOR FUTURE REFERENCE



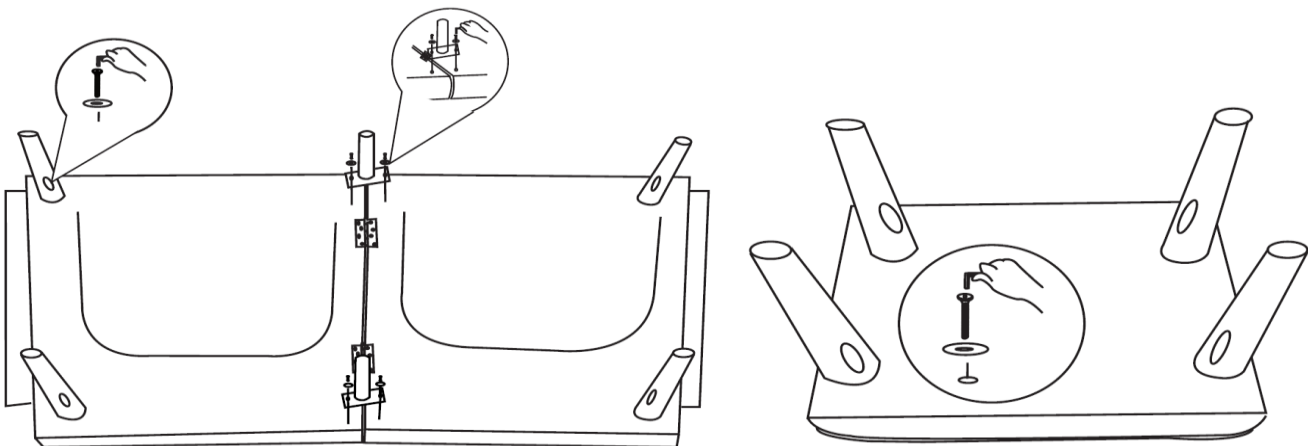
COMPONENTS-FITTINGS

Note: The quantities below are the correct amount to complete the assembly. In some cases more fittings may be supplied than are required.

| A Oblique leg | B Midfoot | C Metal washer | D Short bolt | E Long bolt | F Allen key | G Allen key |
|--|--|--|--|---|--|--|
|  |  |  |  |  |  |  |
| 8PCS | 2PCS | 12PCS | 4PCS | 8PCS | 1PC | 1PC |

ASSEMBLE INSTRUCTION

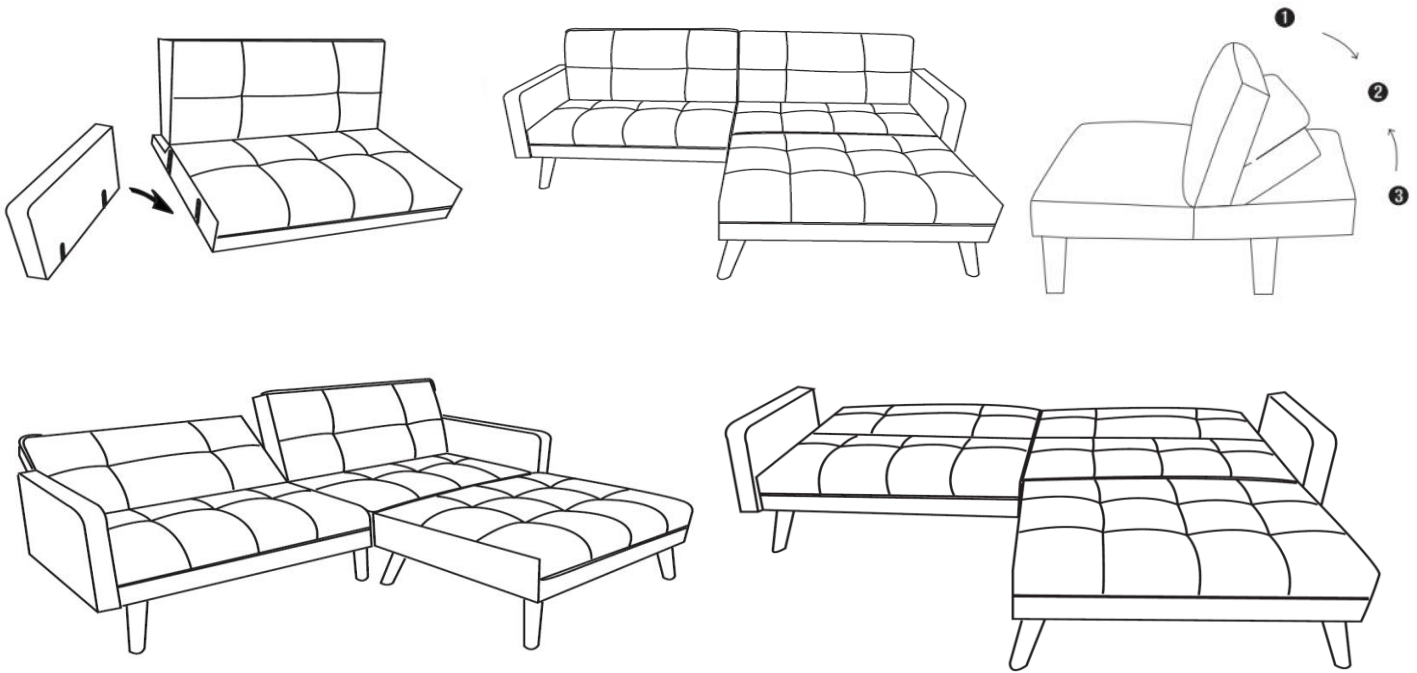
- Step 1** Put the bottom of the sofa facing up, find and open the zipper, take out armrests and the installation package.
- Step 2** Place the washer and insert the screw, and tighten the bolt with the Allen keys to fix the Oblique legs and midfeet of sofa bed. Same method to assemble the legs of ottoman.



IMPORTANT-PLEASE READ THIS INSTRUCTIONS FULLY BEFORE STARTING ASSEMBLY

Step 3

Overturn the sofa then insert the armrest on each side of sofa bed. There are 3 adjustable gear positions on backrest.



IMPORTANT-PLEASE READ THIS INSTRUCTIONS FULLY BEFORE STARTING ASSEMBLY