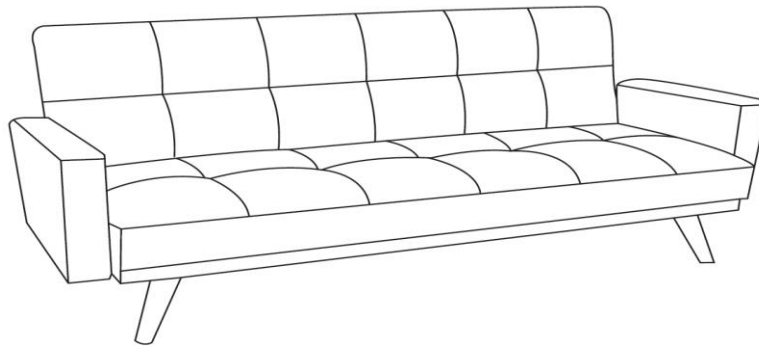






VS2039 Assembly Instruction

ASSEMBLE INSTRUCTION-PLEASE KEEP FOR FUTURE REFERENCE



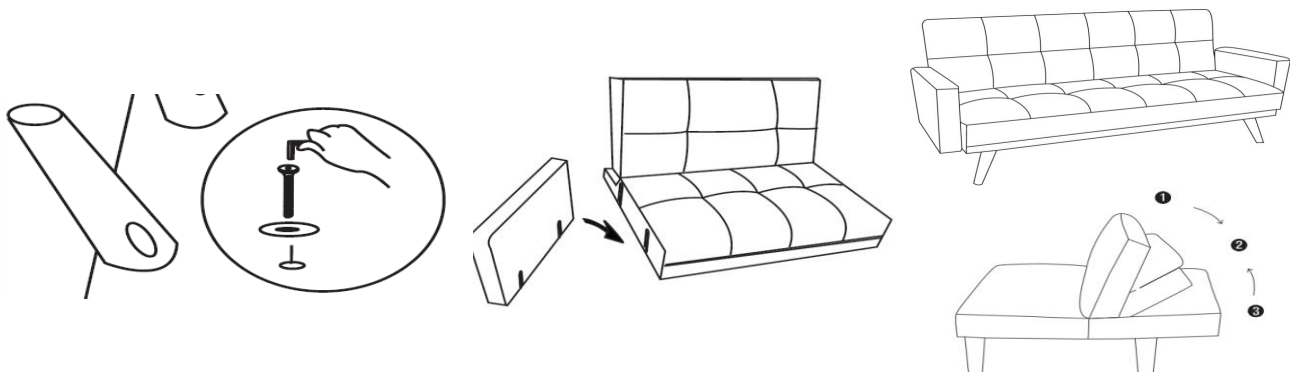
COMPONENTS-FITTINGS

Note: The quantities below are the correct amount to complete the assembly. In some cases more fittings may be supplied than are required.

A Front oblique leg	B Rear Leg	C Metal screw +washer	D Allen key
			
2 PCS	2PCS	2SETS	1PC

ASSEMBLE INSTRUCTION

- Step 1** Put the bottom of the sofa facing up, find and open the zipper, take out armrests and the installation package.
- Step 2** Place the washer and insert the screw, and tighten the screw with the Allen key to fix the front legs. Install the rear straight leg directly into the beried hole.
- Step 3** Overturn the sofa then insert the armrest on each side . There are three adjustable gear positions.



IMPORTANT-PLEASE READ THIS INSTRUCTIONS FULLY BEFORE STARTING ASSEMBLY